



Introduction

BIFA Overview

Using BIFA

Comments

Architecture Review

Projects

Agreements

Outreach

Next Steps

# Detailed Architecture Review

## BIFA Workshop #2

# BIFA Review

---

- **By Service Areas**
  - **Commercial Vehicle Operations / Border Inspection**
  - **Archive Data**
  - **Traveler Information**
  - **Traffic / Maintenance / Emergency Management**
- **Review**
  - **Inventory, resolve unconnected elements**
  - **Market Packages**
  - **Interfaces**
  - **Discuss and Resolve Comments**

---

# Commercial Vehicle Operations

&

# Border Inspection

# Specific Comments

## Customs Terminology

---

- **Comment:** Avoid specific terminology for customs:
  - ✘ ~~Electronic Clearance~~
  - ✘ ~~Preclearance~~
- Replaced standard “International Border Electronic Clearance” with specific market packages for customs.
- Other terminology warnings?

# Specific Comments

## Customs Brokers

- **Comment:** Consider separating Customs Brokers from Shipment Logistics Providers (Freight Forwarders)
- Review and update customs broker definition
- Compare Customs Broker and Shipment Logistics Providers interfaces
  - Create two elements if necessary

Possible Definition: A customs broker acts on behalf of importers and exporters to clear goods through customs. It prepares and transmits required documents or data, pays duties, arranges for bonding, and expedites clearance through customs at ports of entry.

# Specific Comments

## C-TPAT, PIP, etc.

---

- **Comment:** Are border clearance programs such as FAST (Joint), Customs Self Assessment (Canada), C-TPAT (US), PIP (Canada), and ACI (Canada) adequately covered.
- Review CBSA and CBP Border element descriptions and interfaces
  - Verify programs are represented correctly

ACI: Advanced Commercial Information  
C-TPAT: Customs Trade Partnership Against Terrorism

PIP: Partners in Protection  
FAST: Free and Secure Trade

# Border Inspection/CVO Unconnected Elements

---

- **Carrier Supply Chain System**
- **CBP Automated Commercial Environment (ACE)**
- **CBP Field Equipment**
- **CBSA Field Equipment**
- **TSA Systems**
- **US VISIT System**

# Specific Comments

## Carrier Supply Chain System

---

- **Comment:** Supply chain systems info used to gauge transportation corridor performance. ACE could notify carriers of backhaul opportunities?
- Compare supply chain systems with other shipment logistics provider/carrier/shipper elements in BIFA
- Discuss potential interfaces to archives and operational systems
  - e.g., Aggregate data to Border Information Archives?

# Specific Comments

## CBP ACE

---

- **Comment:** ACE could share trade data since it includes ITDS
- **Comment:** ACE interfaces to brokers, carriers, shippers, agencies (FMCSA), others
  - Includes Monthly Payment Service (Financial Institution Interface)
- Review CBP ACE and US Border Inspection Administration Systems and resolve overlap
  - Verify identified ACE interfaces are included in BIFA

# Specific Comments

## CBP/CBSA Field Equipment

---

- **Comment:** Field equipment could provide useful traffic/vehicle residency data
- Discuss function of CBP/CBSA Field Equipment
  - Includes lane open/closed lights, license plate readers, laser sensors, booth entry lights, DMS, CCTV, ...?
- Connect to controlling system if retained (e.g., Border Inspection Systems)

# Specific Comments

## Security Sensor Systems

---

- **Comment:** CBSA does not have plans to install radiation portal monitors?
- Confirm CBSA does not plan to use portal monitors
- Revise element description, include other example sensors if appropriate

# Specific Comments

## TSA Systems

---

- **Comment:** TSA's role at land border crossings should be defined in context with existing DOT/DHS systems using BIFA
- Discuss what we know about TSA's role
- Reflect their role in connections to customs/transportation elements or remove.

# Specific Comments

## US VISIT

---

- **Comment:** US VISIT could tie into Canadian Inbound Inspection process
- **Discuss - Is US Visit Part of US Border Inspection System?**
  - Both support CBP inspection at land POEs
  - Consider combining elements
- **Review Border Traveler Card**
  - Update to represent passport/visa with RFID?

---

# Archive Data

# Archive Comments

---

- **Comment:** Make stakeholders that are general categories more specific
  - Canadian Governmental Agencies
  - US Governmental Agencies
- **Comment:** Don't understand purpose of "Other Planning Organizations" placeholder
- Review BIFA-related archives and how they are represented. Ensure:
  - Every archive is valid/well named
  - No archives are missing

# Archive Comments

---

- **Comment:** Are “Planning Systems” more than data warehouses?
- Review BIFA-related function of various “Planning Systems” and determine if they are more than data archives/warehouses
  - Make system names match system function

# Unconnected Elements

---

- **CBSA Infrastructure Planning System**
- **Other Infrastructure Planning Systems**
- **US CBP Facility Master Plan**
- **Several others have minimal connection**
  - US FHWA Federal Lands Planning System
  - US GSA Infrastructure Planning System

# Archive Comments

## US CBP Facility Master Plan

---

- **Comment:** Is this a data system or a plan/document?
- **Comment:** Organization is interested in regional travel demand, traffic patterns, transportation safety data, etc.
- Update name if appropriate. Make connections to data sources within BIFA scope.

# Archive Comments

## Additional Connections

---

- **Comment:** Planning systems could provide estimated construction schedules
- **Comment:** Missing connection between border inspection administration and border archives?
- **Verify that archives are connected:**
  - Providing archived data to BIFA systems
  - Collecting data from operational systems for archival

# Archive Comments Missing Services?

---

- **Comment:** Archived Data Market Packages may not cover new Binational Data Warehouse (ATIS DMS) project
- Review project and relationship to Archived Data MPs.

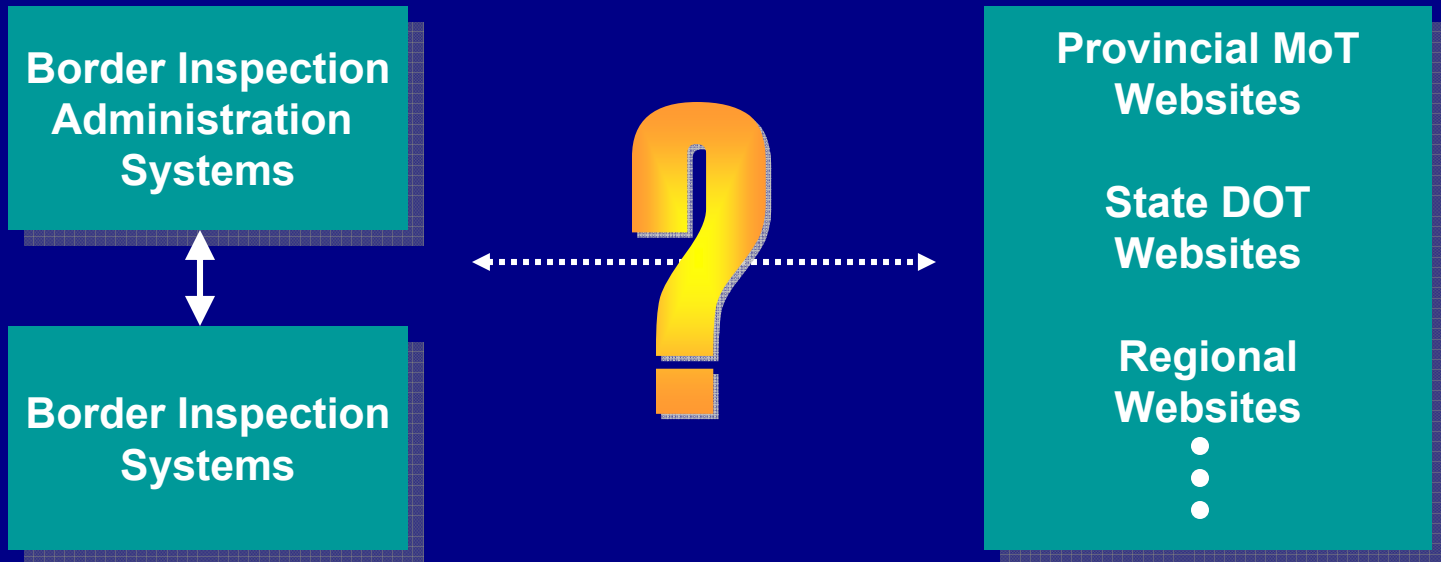
---

# Traveler Information

# Specific Comments

## Customs–Transportation Interfaces

- **Comment:** Link inspection admin/other systems to DOT/MoT border-traffic/wait-time/traveler info systems
- Identify/ add potential connections



---

# **Traffic Management**

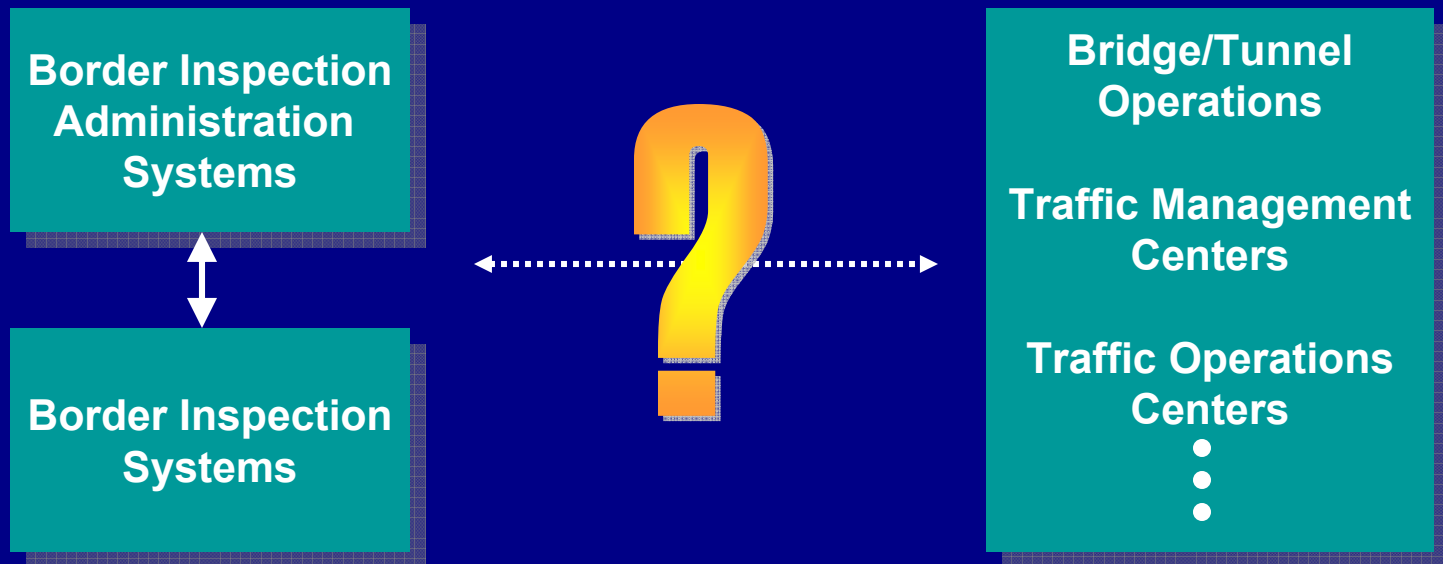
# **Maintenance Management**

# **Emergency Management**

# Specific Comments

## Customs–Transportation Interfaces

- **Comment:** Border Inspection Administration Systems should be connected to transportation system operators
- Identify/ add potential connections



# Specific Comments

## PSEPC Systems

---

- **Comment:** Include PSEPC
- **Discuss PSEPC role in BIFA**
  - Systems operated
  - Existing and planned interfaces with other BIFA elements
- **Address potential overlap**
  - PSEPC includes CBSA and RCMP
  - All three (PSEPC, CBSA, RCMP) included in BIFA

---

**What did we miss?**

